

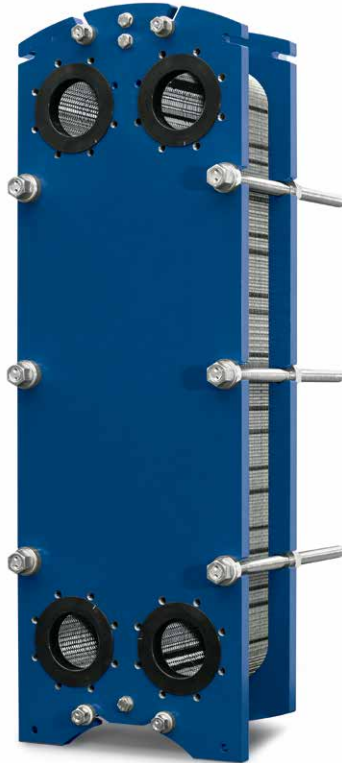
Wärmetauscher AUSTRIA

POWER **S**SOLAR

THERMISCHE HÖCHSTLEISTUNG MIT DER KRAFT VON EXPERTEN

www.power-solar.at / office@power-solar.at

Tel.: +43 (0) 7229-81 800

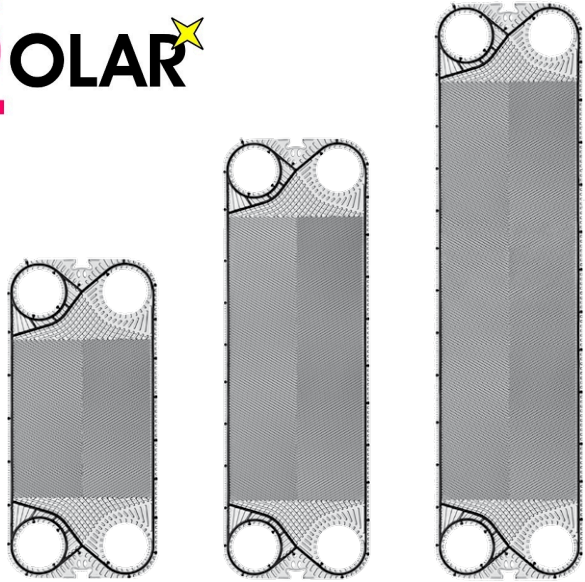


PRODUCT RANGE DN 150+

STANDARD OR CUSTOMIZED

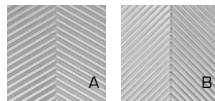
Wärmetauscher AUSTRIA

POWER SOLAR



Product Range	P400+		P600+		P900+	
Exchange area [m ²]	0,390		0,645		0,900	
Width [mm]	500		500		500	
Height [mm]	1055		1503		1951	
Connections diameter	DN150 6"		DN150 6"		DN150 6"	
Channel capacity [l]	1,122		1,659		2,197	
Tightening quote [mm]	3,1		3,1		3,1	
Plate weight [with gasket] [Kg]	1,93		2,86		3,79	
Corrugation angle	A/B		A/B		A/B	
Max. water flowrate [m ³ /h]	380		380		380	
PS=> Max working pressure [bar]	10	16	10	16	10	16
PT=> Max test pressure, EXEMPT* [bar]	15	21	15	21	15	21
PT=> Max test pressure, PED [bar]	16	26	16	26	16	26

Ex art. 3.3 D.Lgs. 93 of 25/02/2000 in accordance with Directive 97/23.
Announced pressures are referred to AISI 316L plates.



Plates are available in two thermal lengths (A/B)

DN32

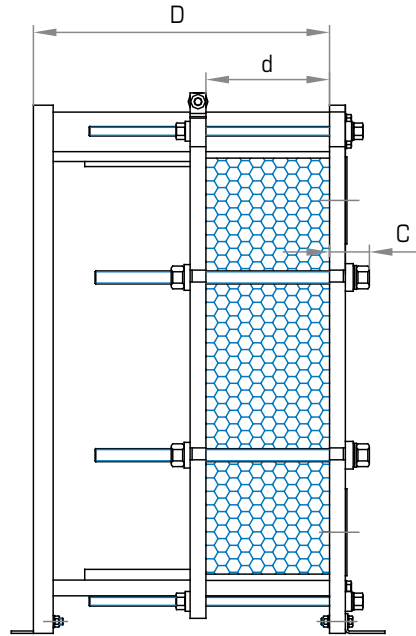
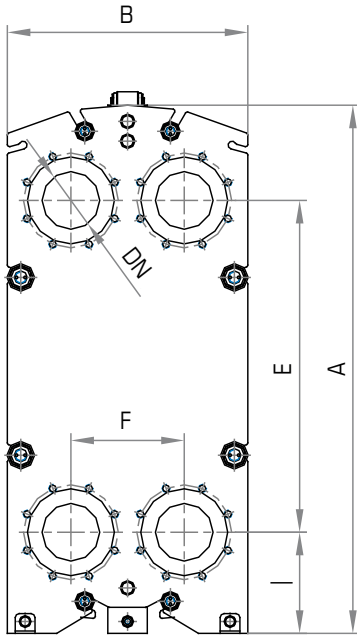
DN50

DN65

DN100

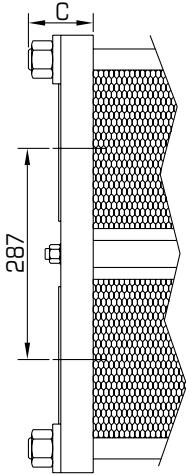
DN150

DN200



	S400+					S600+					S900+						
A	1337					1785					2272						
B	609					609					609						
E	840					1288					1736						
F	287					287					287						
I	256					256					256						
Np max	101	201	301	401	551	101	201	301	401	551	101	201	301	401	551	701	
D max	750	1250	1750	2250	3050	750	1250	1750	2250	3050	750	1250	1750	2250	3050	3880	
d (A-A)	3,1 x Np					3,1 x Np					3,1 x Np						
DN	DN150 6"					DN150 6"					DN150 6"						
A-A B-B C-C E-E C	PS 10		PS 16			PS 10		PS 16			PS 10			PS 16			
U-U V-V	101		111			101		111			101			111			

All dimensions are in mm - Np = number of plates



A-A

Studded ports
Rubber lining
EN 1092-1

B-B

Studded ports
AISI 316 lining
EN 1092-1

C-C

Studded ports
Rubber lining
ANSI 150 lbs
metric thread

E-E

Studded ports
AISI 316 lining
ANSI 150 lbs
metric thread

U-U

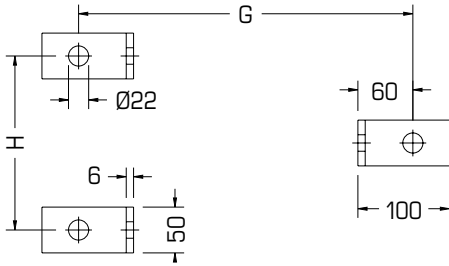
Studded ports
Ulined EN 1092-1

V-V

Studded ports
Ulined ANSI 150
lbs metric thread

Wärmetauscher AUSTRIA
POWER  **S**OLAR 

Support Feet



GxH	PS10	PS16
S400+ / S600+ / S900+		
Max 101p	866x520	876x520
Max 201p	1366x520	1376x520
Max 301p	1866x520	1876x520
Max 401p	2366x520	2376x520
Max 551p	3166x520	3176x520
GxH	PS10	PS16
S900+		
Max 701p	3983x520	3983x520

Materials

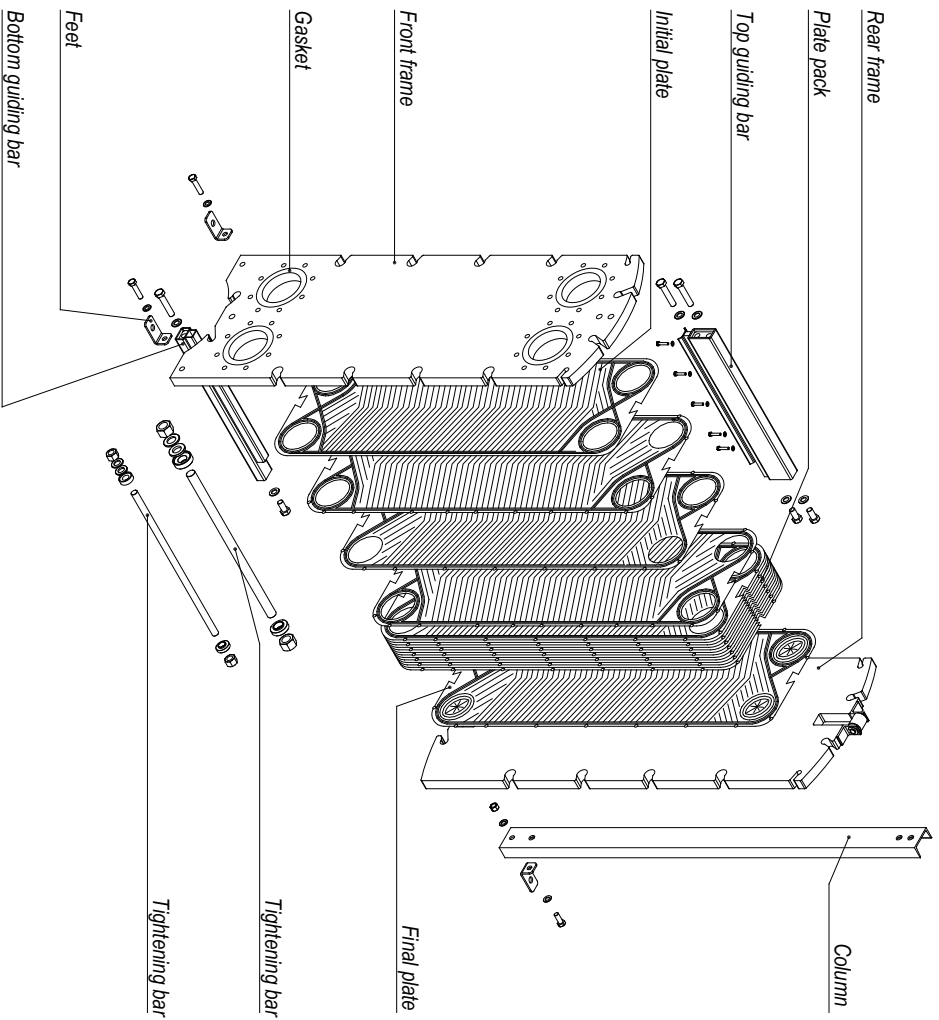
		S400+	S600+	S900+
Plate	Inox AISI 304	●	●	●
	Inox AISI 316L	●	●	●
	254 SMO	●	●	
	Titanium	●	●	
Gasket	NBR	●	●	●
	EPDM Prx.	●	●	●
	FPM	●	●	●
	HNBR	●	●	●
Frame	Carbon steel	●	●	●
	AISI 304, cladde			
Connection type	A-A B-B C-C E-E U-U V-V	●	●	●

Gaskets material maximum temperatures

NBR	-20 °C	110 °C
EPDM Prx.	-20 °C	160 °C
FPM	-20 °C	200 °C
HNBR	-20 °C	160 °C

The temperatures must be considered not applicable in all working conditions.

Component blow-up drawings Models S400+, S600+, S900+



CERTIFICATIONS APPROVALS



- ISO 9001
Quality Management
- PED 97/23/EC
Pressure Equipment Directive
Module B, D1 & D (up to Risk Cat. IV)



- ACS
Attestation de Conformité Sanitaire



- GOST-R
Certificate of Conformity



- OHSAS 18001
Occupational Health and Safety



- ISO 14001
Environmental Management

MADE IN ITALY

Wärmetauscher AUSTRIA
POWER SOLAR

THERMISCHE HÖCHSTLEISTUNG MIT DER KRAFT VON EXPERTEN
www.power-solar.at / office@power-solar.at
Tel.: +43 (0) 7229-81 800